

—帶—路
METRANS

**INTERMODAL
OPERATOR
WITH THE LARGEST
RAIL & TERMINAL
NETWORK IN EUROPE**



APRIL 2020

METRANS Group

2019 Figures

- **General information:**
founded 1991, 100% HHLA
- **Revenue:**
over 450 000 000 EUR
- **Intermodal:**
over 1 200 000 TEU
- **Depots:**
over 1 075 000 TEU
- **Employees:**
2 186 (December 2019)



Profile of the METRANS Group

Terminals, Locomotives, Wagons and Repair Shops

5 HUB terminals & depots

Czech Republic, Slovakia, Poland & Hungary

11 inland terminals & depots

Czech Republic, Slovakia, Poland, Austria & Germany

NEW TERMINALS 2019 # 15 ZILINA and # 16 BERLIN

Over 2 million sqm on Depot & Terminal capacities

Almost 80 locomotives

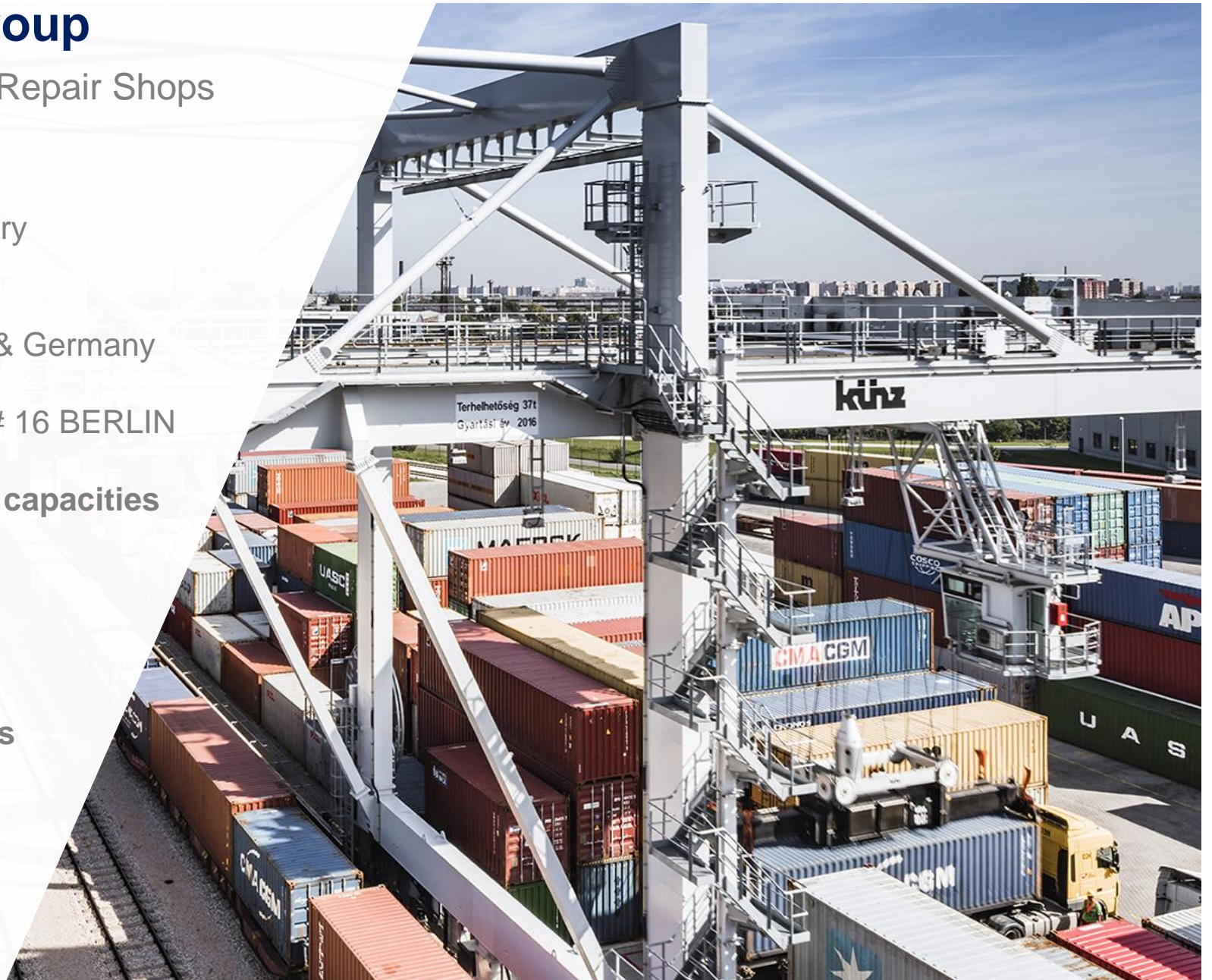
Almost 3.000 wagons

2 repair shops for locomotives & wagons

Kolin & Dunajská Streda

Offices in the ports

of Hamburg, Bremerhaven & Koper

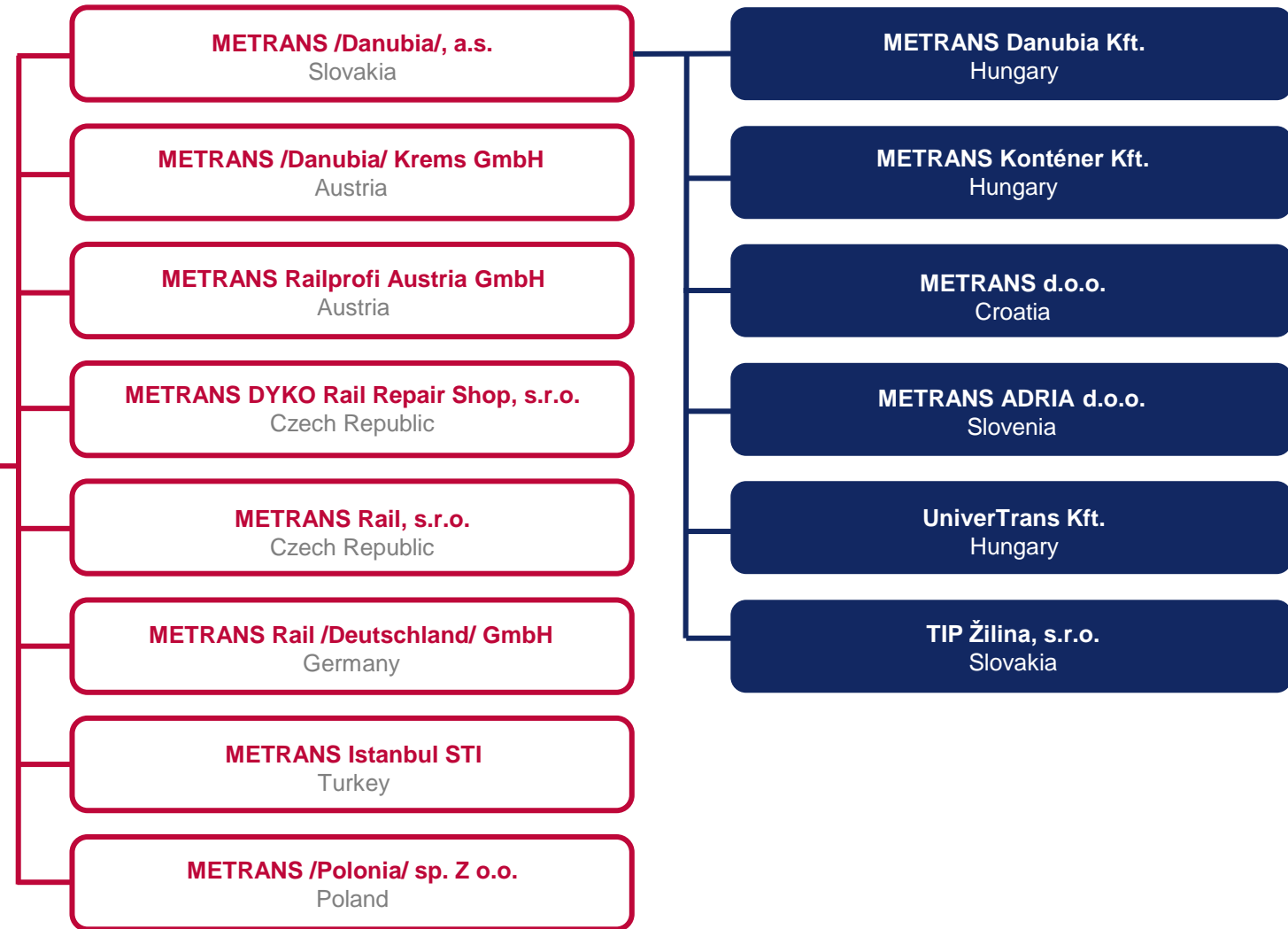


METRANS Group

Established in 1991, sites in 9 countries, more than 2000 employees



METRANS, a.s.
Prague, Czech Republic



The largest European network

We provide all-inclusive just-in-time intermodal rail-road transportation service

METRANS operates own shuttle trains with cargo in maritime deep sea and short sea and for long haul trains

Transport of standard equipment, reefers, tank and special containers to / from the
Czech Republic / Slovakia / Hungary / Germany / Austria / The Netherlands / Belgium / Slovenia / Poland / Italy

We connect these countries by rail with major European ports
Hamburg / Bremerhaven / Rotterdam / Duisburg

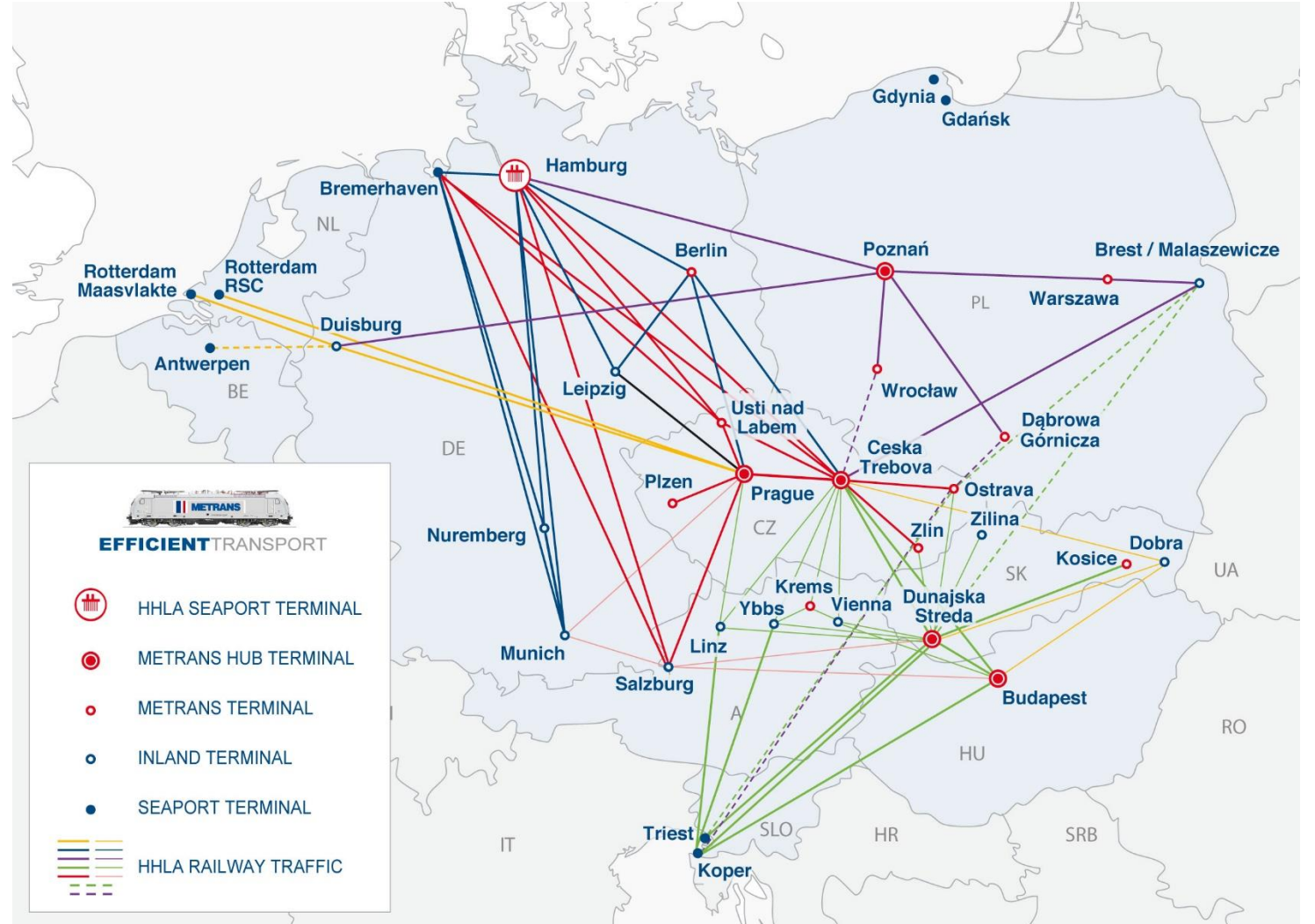
or southbound rail connection to
Koper / Trieste / Rijeka



METRANS

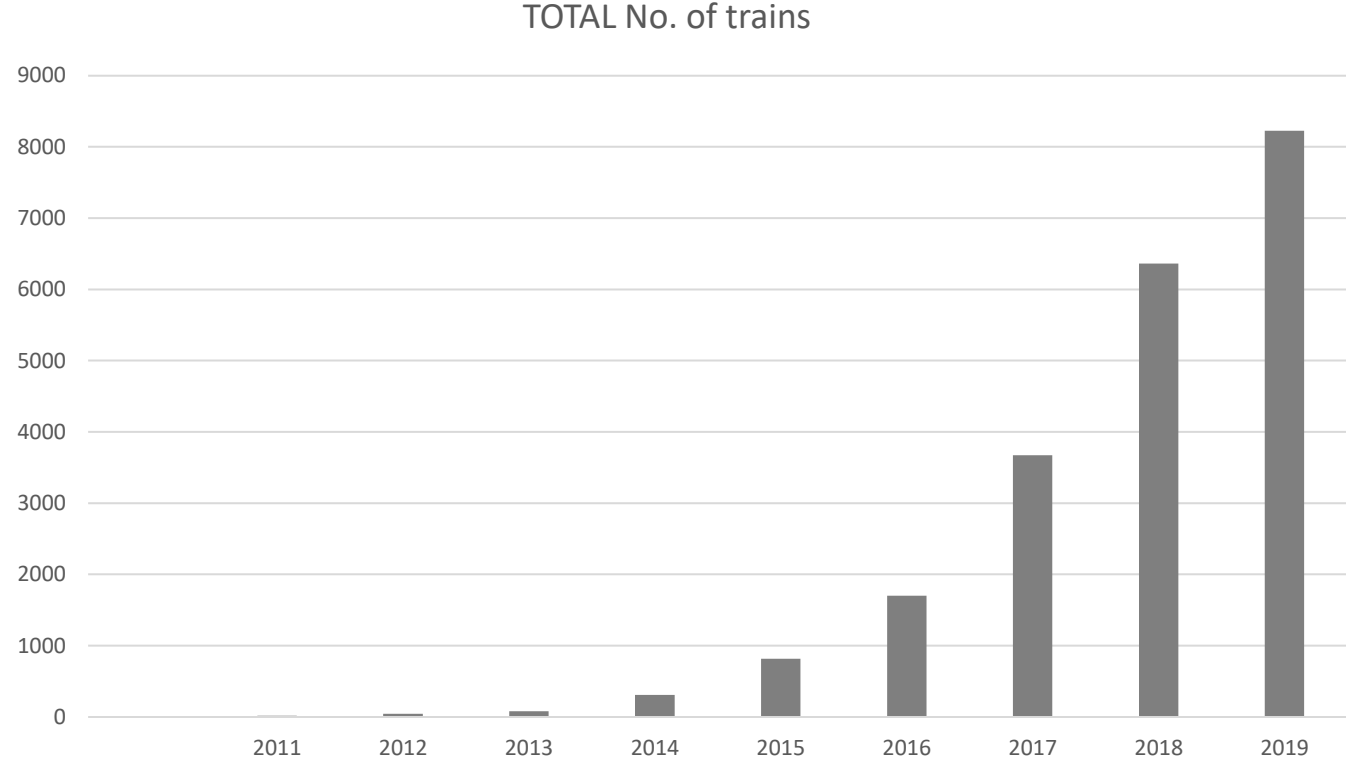
Over 550 regular train connections per week

从/到			每周班列次数
Hamburg	↔	Prague	54
Hamburg	↔	Ceska Trebova	32
Hamburg	↔	Dunajska Streda	14
Bremerhaven	↔	Prague	13
Bremerhaven	↔	Ceska Trebova	12
Bremerhaven	↔	Dunajska Streda	6
Rotterdam	↔	Prague	10
Rotterdam	↔	Ceska Trebova	4
Duisburg	↔	Prague	6
Koper	↔	Dunajska Streda	35
Koper	↔	Budapest	28
Prague	↔	Ceska Trebova	28
Prague	↔	Plzen	12
Prague	↔	Salzburg	10
Prague	↔	Leipzig	1
Ceska Trebova	↔	Dunajska Streda	28
Ceska Trebova	↔	Kosice	4
Ceska Trebova	↔	Zlin	14
Ceska Trebova	↔	Ostrava	12
Ceska Trebova	↔	Krems	4
Dunajska Streda	↔	Kosice	12
Dunajska Streda	↔	Budapest	13
Dunajska Streda	↔	Krems	2
Hamburg	↔	Nuremberg	16
Hamburg	↔	Munich	16
Hamburg	↔	Leipzig	14
Bremerhaven	↔	Nuremberg	8
Bremerhaven	↔	Munich	8
Nuremberg	↔	Munich	8



Is there a real demand for rail movements between CHINA & EUROPE and v.v. ?

	2011	2012	2013	2014	2015	2016	2017	2018	2019
TOTAL No. of trains	17	42	80	308	815	1702	3673	6363	8225



Why to choose METRANS NETWORK & SOLUTION

We connect The Belt and Road initiative to the Europe via

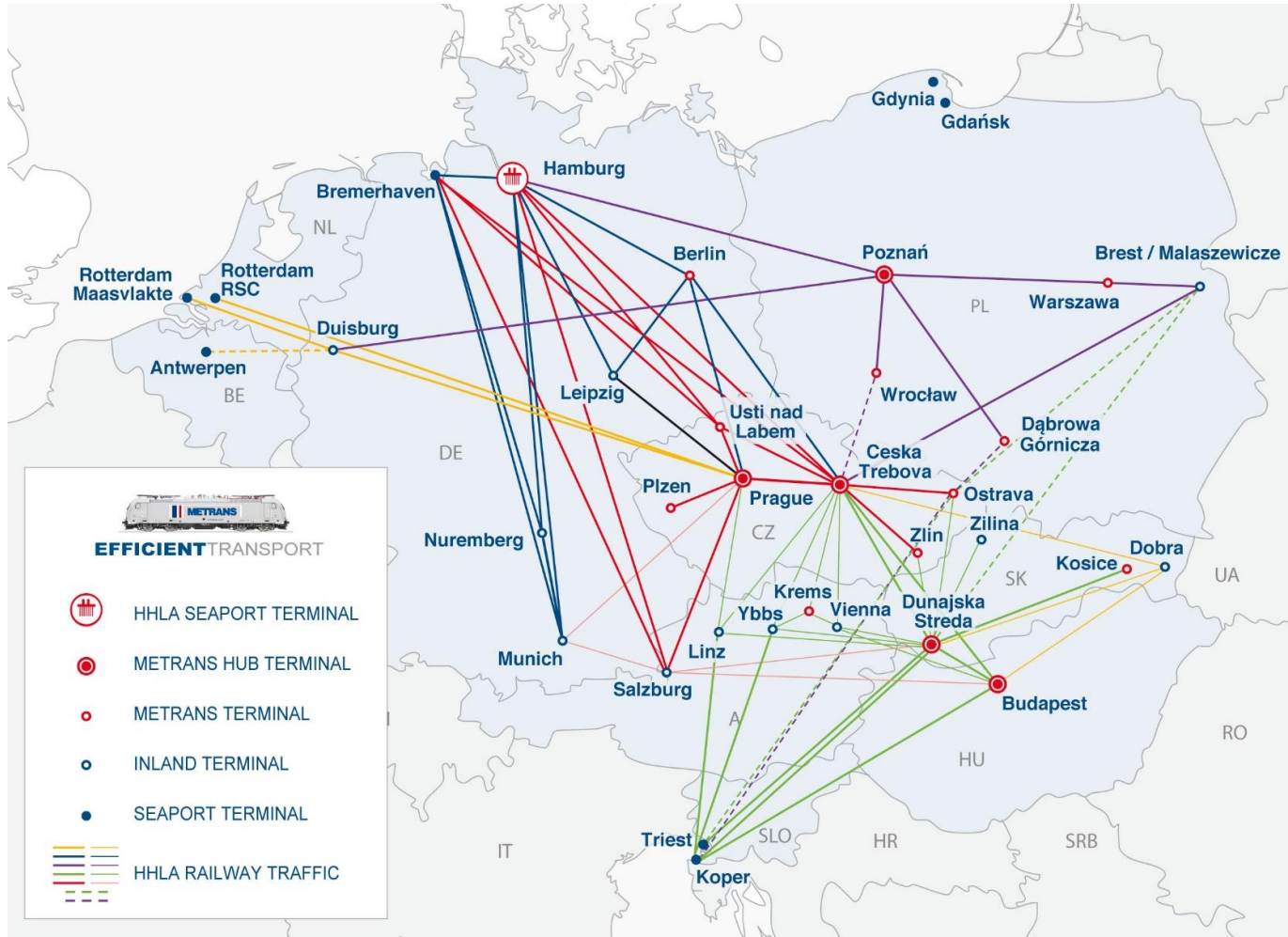
- Malaszewice / Brest (PL / BY)
and
- Dobra / Chop (SK / UA)

with our network of own, high sophisticated container terminals & depots and modern railway hubs in

Prague (CZ) / Prague East (Ceska Trebova,CZ) /
Dunajska Streda (SK) / Budapest (HU) /
Poznan (PL)



Connection To SILK ROAD



- **Xian&Wuhan – Ceska Trebova (cz)**
 - 2 x Trains ex Xian per week
 - 1x Train ex Wuhan per week
 - Routing via Malaszewicze
 - HUB Concept to METRANS Network
 - Connection to Dunajska Streda, Krems, Salzburg, Budapest, Hamburg, Duisburg
- **Zhengzhou – Hamburg (DE)**
 - 2 x Trains per week
 - Direct connection to Hamburg and via Hamburg to Munich
- **Xiamen/Wuhan – Poznan (PL)**
 - 1-2 x trains per Week
 - HUB Concept
 - Direct connection to Hamburg and Duisburg
- **Xian – Dunajská Streda (sk)**
 - 1 x Train per week
 - Routing via Dobra
 - HUB Concept Dobra
 - Start of regular service Q1 2020
- **Yiwu – Ceska Trebova (cz)**
 - HUB Concept to METRANS network
- **Dobra – Dunajska Streda**
 - Connection to METRANS Network

Why to choose our network for cargo from / to Far East?

Connect your cargo to METRANS network!

- METRANS operates regular weekly trains and supports partners from several Chinese origins as well as destinations and connecting them with our network
- Only last / first mile from / to "HUB" or "END" terminal is arranged by trucks
- By using of latest technologies and innovations on the field of transport and handling we are reducing CO2 emissions as much as possible.
- Possibility to connect with terminals of other operators using METRANS network within the whole Europe – **neutrality guaranteed**
- **Dobra terminal** on the border with Ukraine as entry point to European Union and perfect connection to METRANS network
- **Malaszewicze / Brest terminals**



Why to choose our network for cargo from / to Far East?

Connect your cargo to METRANS network!

- Strong and fast growing network of METRANS allows to find the most efficient way for your cargo
- Ability to combine export cargo from different European countries and choose the nearest HUB terminal (Ceska Trebova, Dunajska Streda or Budapest)
- New additional routing from Budapest to Xiamen
- New additional routing for import trains
 - Entry point to EU: Dobra / Chop – using transit via Ukraine



Why to choose our network for cargo from / to Far East?

Connect your cargo to METRANS network!

- METRANS keeps **neutrality** also on the movements connected to SILK ROAD
- High quality service – METRANS keeps on all of his services highest standards
- Cargo connected to Europe largest rail & terminal network
- Wide range of benefits to our customers
 - Customs clearance directly at the terminal
 - Chinese speaking employee
 - Dedicated customer service desk for shipments connected to SILK ROAD



With whom we are connected – our partners

Connect your trains to METRANS network!

METRANS is happy to offer you last mile – trucking from / to all our terminals.

RFQ CY China – CY Europe, or CY Europe – CY China should be sent to the following emails:

Xian, Wuhan, Xiamen: sales@trans-Eurasia.cn

Yiwu: chenkaifeng@yixinou.com

Zhengzhou: kangyan@zih718.com

For last mile / first mile trucking or additional requests pls contact **our pricing department China:**

Pricescn@metrans.eu





**THANK YOU FOR
YOUR ATTENTION!**