

—帶—路  
**METRANS**

**INTERMODAL  
OPERATOR  
WITH THE LARGEST  
RAIL & TERMINAL  
NETWORK IN  
EUROPE**





# METRANS

2021 figures

## General information:

founded 1991, 100% HHLA

## Revenue:

nearly 490 600 000 EUR

## Intermodal:

over 1 380 000 TEU

## Depots:

over 1 215 685 TEU

## Employees:

2 244 (December 2021)





# Profile of the METRANS Group

*Terminals, Locomotives, Wagons and Repair Shops*



## **8 HUB terminals & depots**

*Czech Republic, Slovakia, Poland, Hungary and Austria*

## **11 inland terminals & depots**

*Czech Republic, Slovakia, Poland & Germany*

## **NEW HUB TERMINALS from 2022**

KREMS

MALASZEWICZE

**Over 2 million m<sup>2</sup> on Depot & Terminal capacities**

**More than 100 locomotives**

**More than 3 000 wagons**

## **2 repair shops for locomotives & wagons**

*Kolin & Dunajska Streda*

## **Offices in the ports**

*of Hamburg, Bremerhaven & Koper*



# METRANS Group

*Established in 1991,  
sites in 9 countries,  
more than 2 000 employees*



**METRANS, a.s.**  
Prague, Czech Republic

[www.metrans.eu](http://www.metrans.eu)



**METRANS**



# The largest European network



We provide all-inclusive just-in-time intermodal rail-road transportation service

METRANS operates own shuttle trains with cargo in maritime deep sea and short sea and for long haul trains

Transport of standard equipment, reefers, tank and special containers to / from the  
**Czech Republic / Slovakia / Hungary / Germany / Austria / The Netherlands / Belgium / Slovenia / Poland / Italy**

We connect these countries by rail with major European ports  
**Hamburg / Bremerhaven / Rotterdam / Duisburg**

or southbound rail connection to  
**Koper / Trieste / Rijeka**

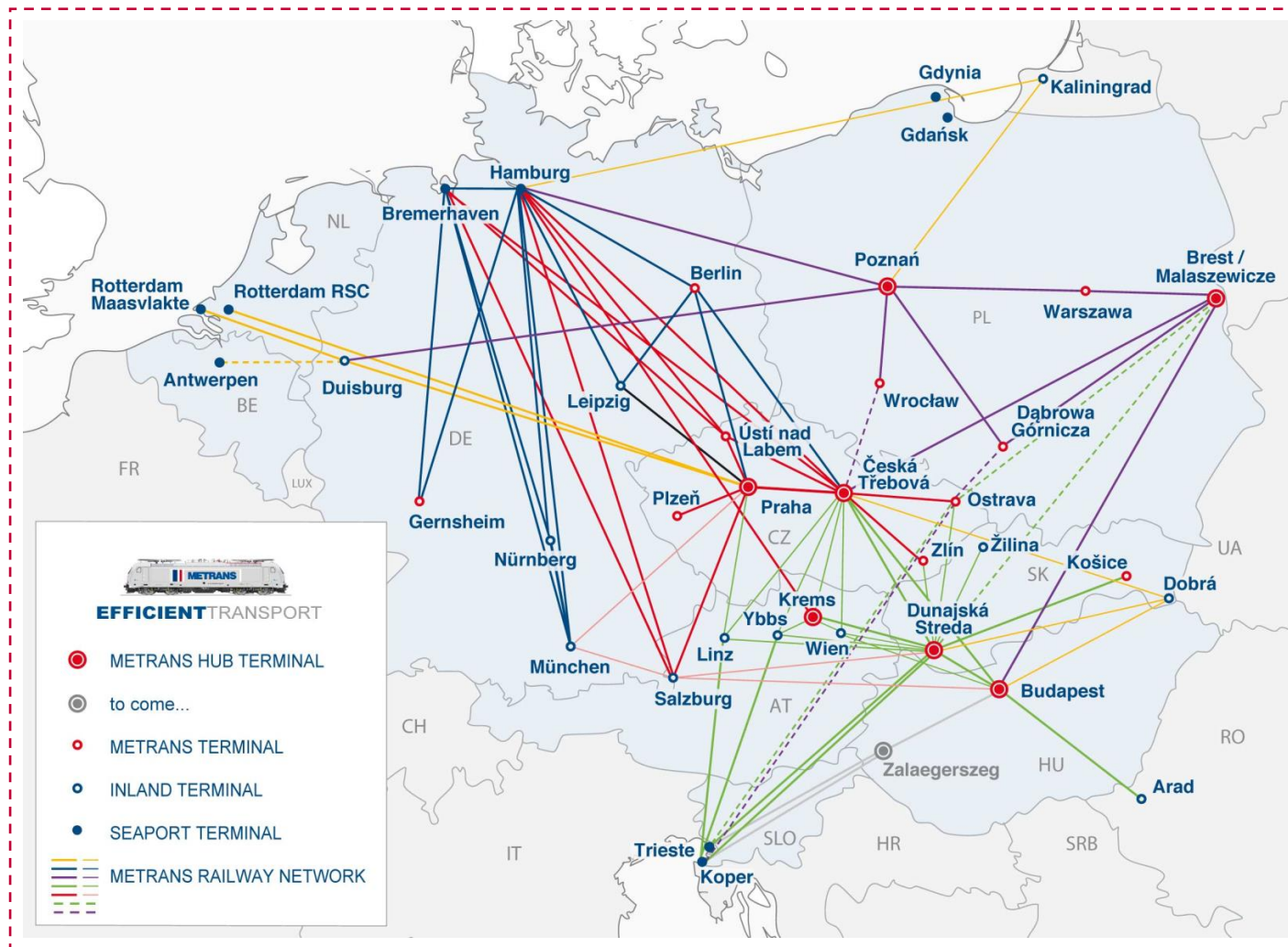


# METRANS

Over 600 regular train connections per week

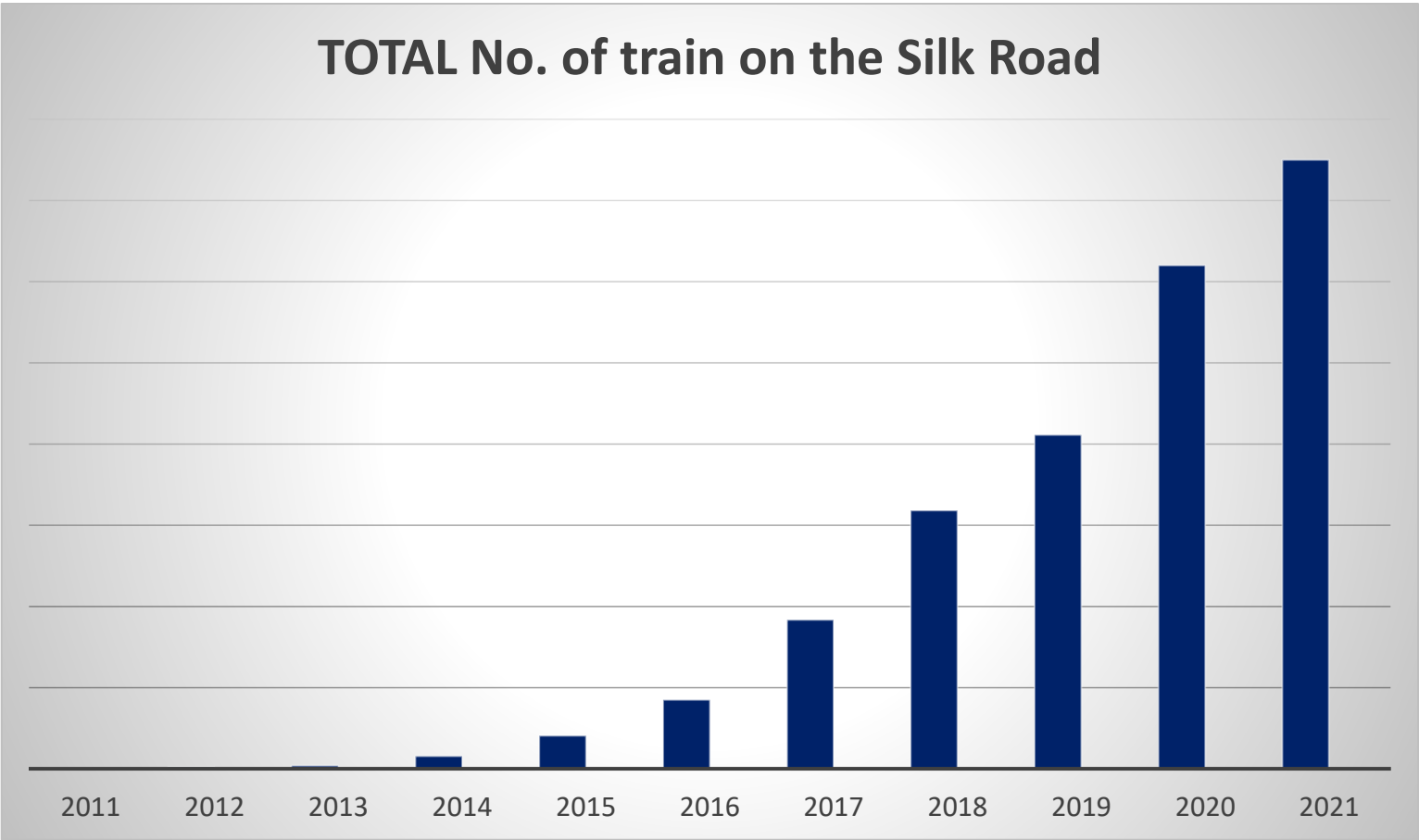
METRANS

From/To		Trains per Week
Hamburg	↔	Praha 54
Hamburg	↔	Ceska Trebova 32
Hamburg	↔	Dunajska Streda 14
Bremerhaven	↔	Praha 13
Bremerhaven	↔	Ceska Trebova 12
Bremerhaven	↔	Dunajska Streda 6
Rotterdam	↔	Praha 10
Duisburg	↔	Praha 6
Koper	↔	Dunajska Streda 35
Koper	↔	Budapest 28
Praha	↔	Ceska Trebova 28
Praha	↔	Salzburg 10
Praha	↔	Leipzig 1
Ceska Trebova	↔	Dunajska Streda 28
Ceska Trebova	↔	Kosice 4
Ceska Trebova	↔	Zlin 14
Ceska Trebova	↔	Ostrava 12
Ceska Trebova	↔	Krems 4
Ceska Trebova	↔	Linz 6
Dunajska Streda	↔	Kosice 12
Dunajska Streda	↔	Budapest 13
Dunajska Streda	↔	Krems 2
Hamburg	↔	Nürnberg 16
Hamburg	↔	München 16
Hamburg	↔	Leipzig 14
Bremerhaven	↔	Nürnberg 8
Bremerhaven	↔	München 8
Nürnberg	↔	München 8
Hamburg	↔	Berlin 10
Hamburg	↔	Gernsheim 6
Hamburg	↔	Gadki 18

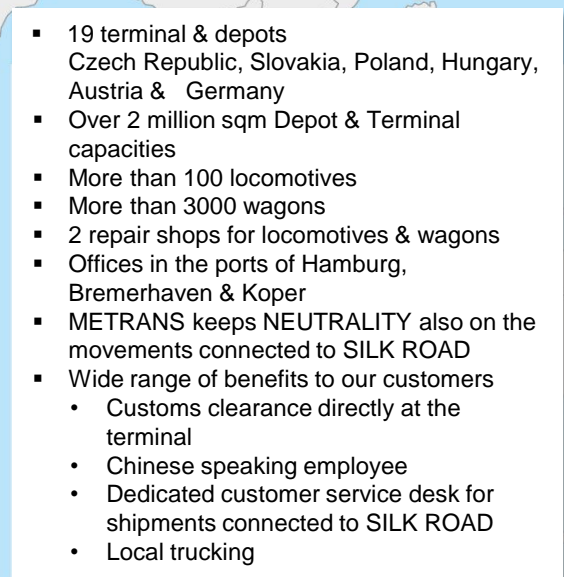


# Is there a real demand for rail movements between CHINA & EUROPE and v.v. ?

	2011	2012	2013	2014	2015	2016	2017	2018	2019	2020	2021
TOTAL No. of trains on the Silk Road	17	42	80	308	815	1702	3673	6363	8225	12400	15000







- 19 terminal & depots  
Czech Republic, Slovakia, Poland, Hungary,  
Austria & Germany
- Over 2 million sqm Depot & Terminal  
capacities
- More than 100 locomotives
- More than 3000 wagons
- 2 repair shops for locomotives & wagons
- Offices in the ports of Hamburg,  
Bremerhaven & Koper
- METRANS keeps NEUTRALITY also on the  
movements connected to SILK ROAD
- Wide range of benefits to our customers
  - Customs clearance directly at the  
terminal
  - Chinese speaking employee
  - Dedicated customer service desk for  
shipments connected to SILK ROAD
  - Local trucking



# Why to choose METRANS NETWORK & SOLUTION



We connect The Belt and Road initiative to the Europe via

**Malaszewice / Brest (PL / BY) or Dobra /  
Chop (SK / UA)**

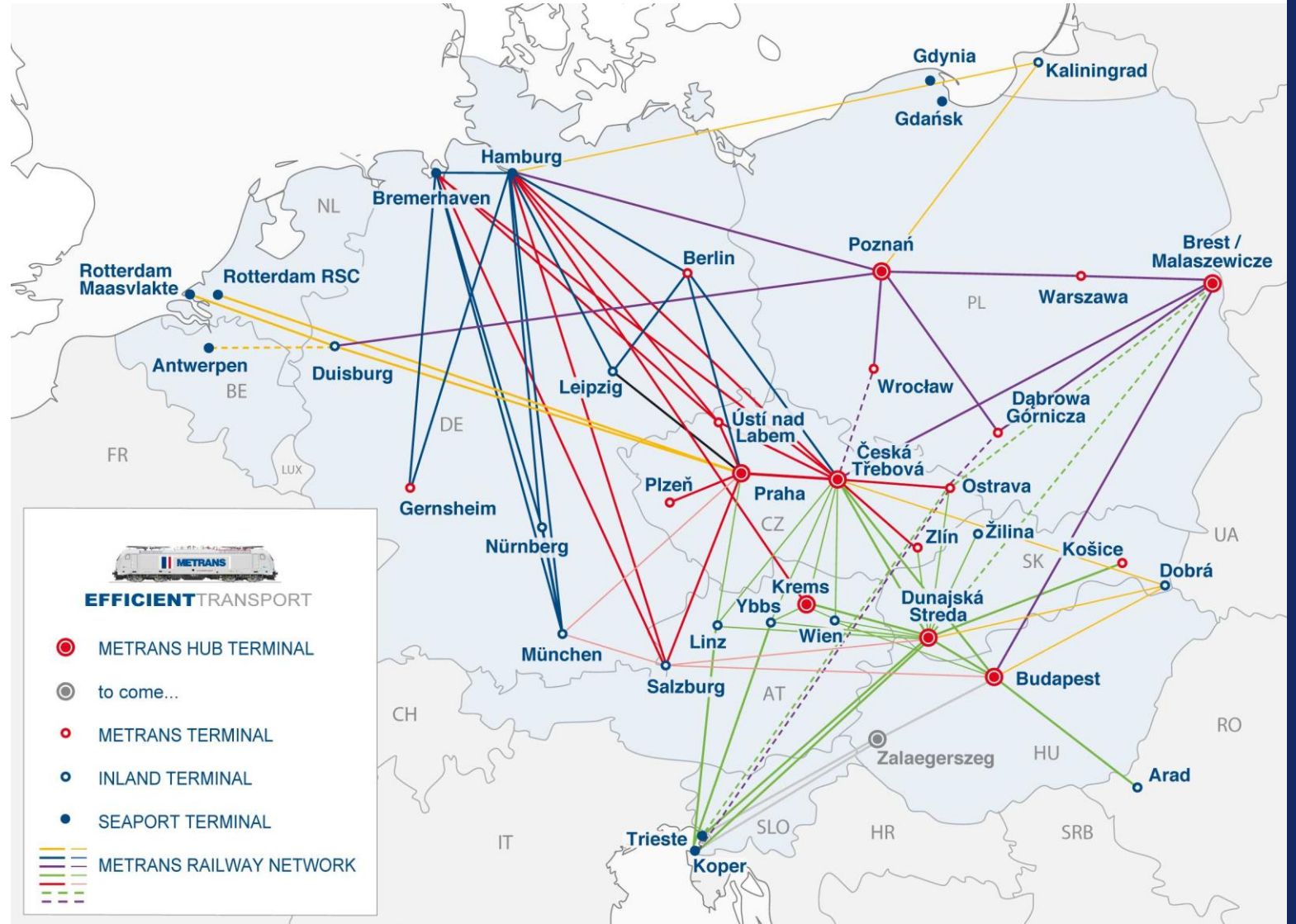
with our network of own, high sophisticated container  
terminals & depots and modern railway hubs in

**Prague (CZ) / Prague East (Ceska Trebova,CZ) /  
Dunajska Streda (SK) / Budapest (HU) /  
Poznan (PL)**



# Connection To SILK ROAD

- **Xian & Wuhan – Ceska Trebova (CZ)**
  - 3 x Trains ex Xian per week
  - 1x Train ex Wuhan per week
    - Routing via Malaszewicze
    - HUB Concept to METRANS Network
    - Connection to Dunajska Streda, Krems, Salzburg, Budapest, Hamburg, Duisburg
- **Zhengzhou – Hamburg (DE)**
  - 2 x Trains per week
    - Direct connection to Hamburg and via Hamburg to Munich
- **Changsha/Shenzhen – Hamburg/Duisburg (DE)**
  - 1 x Trains per week
- **Xian – Milano (IT)**
  - 1 x Train per week
- **Jinhua – Budapest (HU)**
  - 1 x Train per week





# Why to choose our network for cargo from / to Far East?

Connect your cargo to METRANS network!

- METRANS operates regular weekly trains and supports partners from several Chinese origins as well as destinations and connecting them with our network
- Only last / first mile from / to "HUB" or "END" terminal is arranged by trucks
- By using of latest technologies and innovations on the field of transport and handling we are reducing CO<sub>2</sub> emissions as much as possible.
- Possibility to connect with terminals of other operators using METRANS network within the whole Europe – **neutrality guaranteed**
- **Dobra terminal** on the border with Ukraine as entry point to European Union and perfect connection to METRANS network
- **Malaszewicze / Brest terminals connected**



# Why to choose our network for cargo from / to Far East?

Connect your cargo to METRANS network!

- Strong and fast growing network of METRANS allows to find the most efficient way for your cargo
- Ability to combine export cargo from different European countries and choose the nearest HUB terminal (Ceska Trebova, Dunajska Streda or Budapest)
- Ready for a new alternative solution (i.e. via Turkey/Azerbaijan/Constanta to EU )





# Why to choose our network for cargo from / to Far East?

Connect your cargo to METRANS network!

- METRANS keeps **neutrality** also on the movements connected to SILK ROAD
- High quality service – METRANS keeps on all of his services highest standards
- Cargo connected to Europe largest rail & terminal network
- Wide range of benefits to our customers
  - Customs clearance directly at the terminal
  - Chinese speaking employee
  - Dedicated customer service desk for shipments connected to SILK ROAD





THANK YOU  
FOR YOUR  
ATTENTION!



**METRANS**

**METRANS**

**METRANS**

**ki**

**METRANS**

**ONE**

**ONE**

**ONE**

**ONE**

**ONE**