

# THE INTERMODAL LOGISTICS OF METRANS

## THE NEUTRAL & GLOBAL INTERMODAL SOLUTIONS

**METRANS**



## CONTAINER

Container handling  
Container-related services (e.g. repair and maintenance)



## INTERMODAL

Rail & road transport services in the ports' hinterland  
Operation of hinterland terminals



## LOGISTICS

Specialist handling – dry bulk, fruit, ro-ro, etc.  
Consultancy



## REAL ESTATE

Speicherstadt, the historical warehouse district  
Port real estate  
Fischmarkt Hamburg-Altona



# HHLA

Group Segments

**PORT LOGISTICS  
SUBGROUP**



[www.metrans.eu](http://www.metrans.eu)





## GENERAL INFORMATION

Founded 1991, 100% HHLA



## REVENUE

Over 590 million EUR



## INTERMODAL

Over 1,35 million TEU



## DEPOTS

Over 1,2 million TEU



## EMPLOYEES

2 650



# METRANS

2023 key figures

# METRANS GROUP PROFILE

Terminals, Locomotives, Wagons and Repair Shops



## 7 HUB TERMINALS & DEPOTS

Austria, Czech Republic, Hungary, Poland & Slovakia



## 13 END TERMINALS & DEPOTS

Czech Republic, Germany, Romania, Poland, Serbia & Slovakia



## DEPOT & TERMINAL CAPACITIES

2,6 million m<sup>2</sup>



## OFFICES IN THE PORTS

of Bremerhaven, Hamburg, Koper & Rijeka



MORE THAN 130 LOCOMOTIVES



MORE THAN 4 000 WAGONS



2 REPAIR SHOPS FOR LOCOMOTIVES & WAGONS

Kolin (CZ) & Dunajska Streda (SK)

### NEW

- 24/7 OPERATION BELGRADE (INDJIJA)
- NEW OFFICES IN ISTANBUL & ROTTERDAM
- NEW SERVICE THE GAS MEASUREMENT
- FURTHER DEVELOPMENT OF THE HHLA PURE – CO<sub>2</sub> NEUTRAL TRANSPORTATION

+ 2 NEW  
TERMINALS  
IN PLAN  
FOR HUNGARY

+ DEVELOPMENT  
OF THE PRESENT  
NETWORK

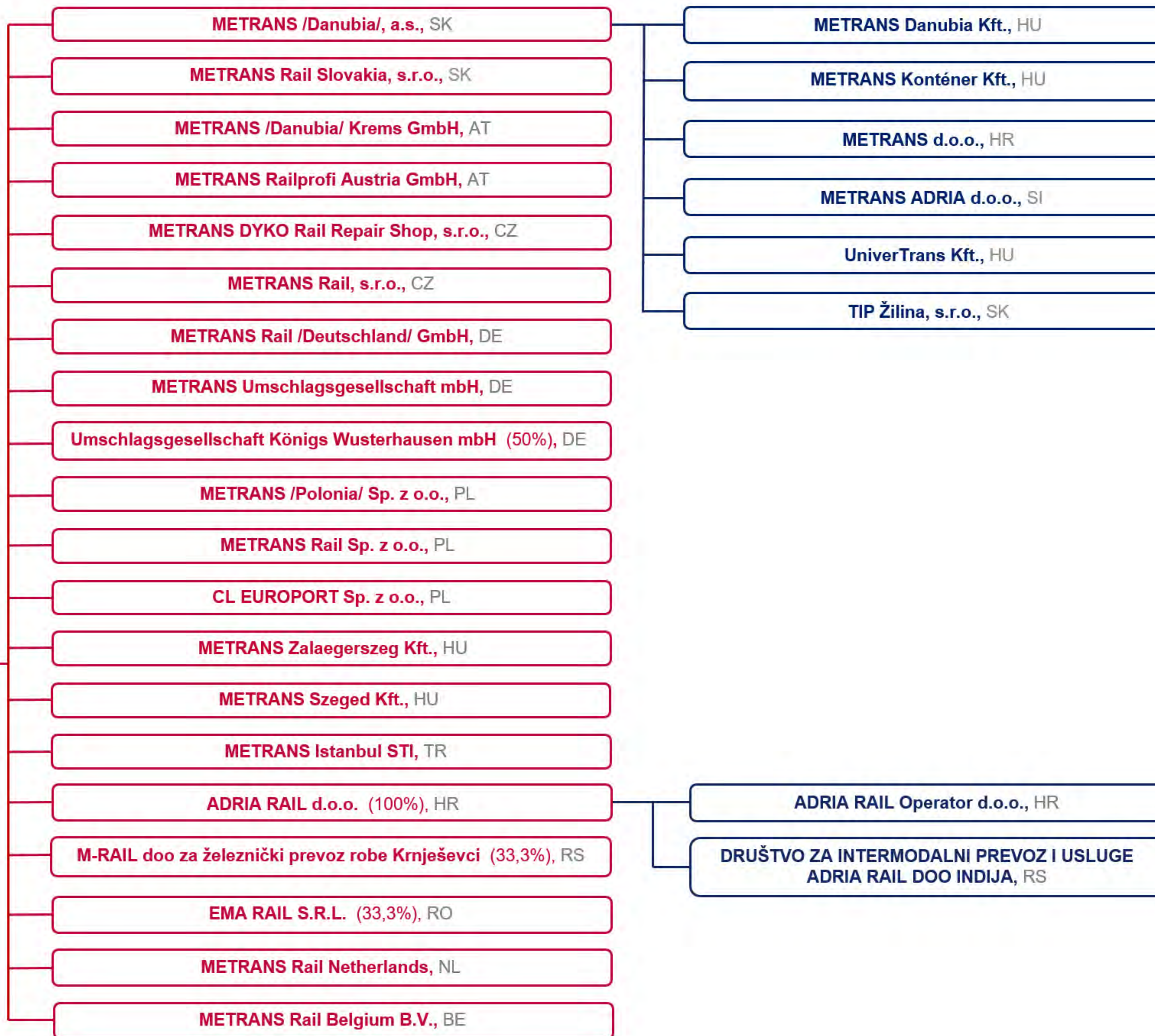
# METRANS GROUP

Company structure



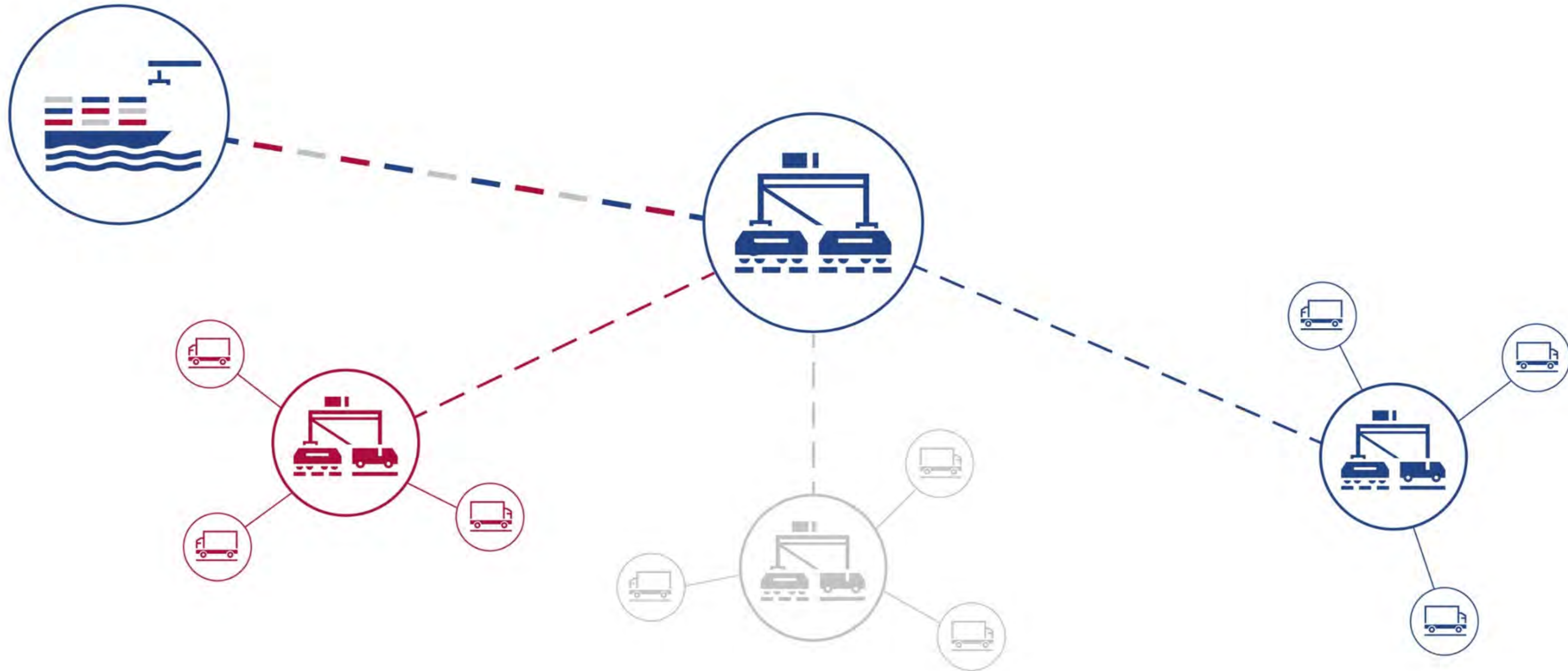
**METRANS, a.s.**  
Prague, Czech Republic

 [www.metrans.eu](http://www.metrans.eu)



# THE HUB & SHUTTLE SYSTEM

The Ports are linked with a Network of HUB and Inland Terminals

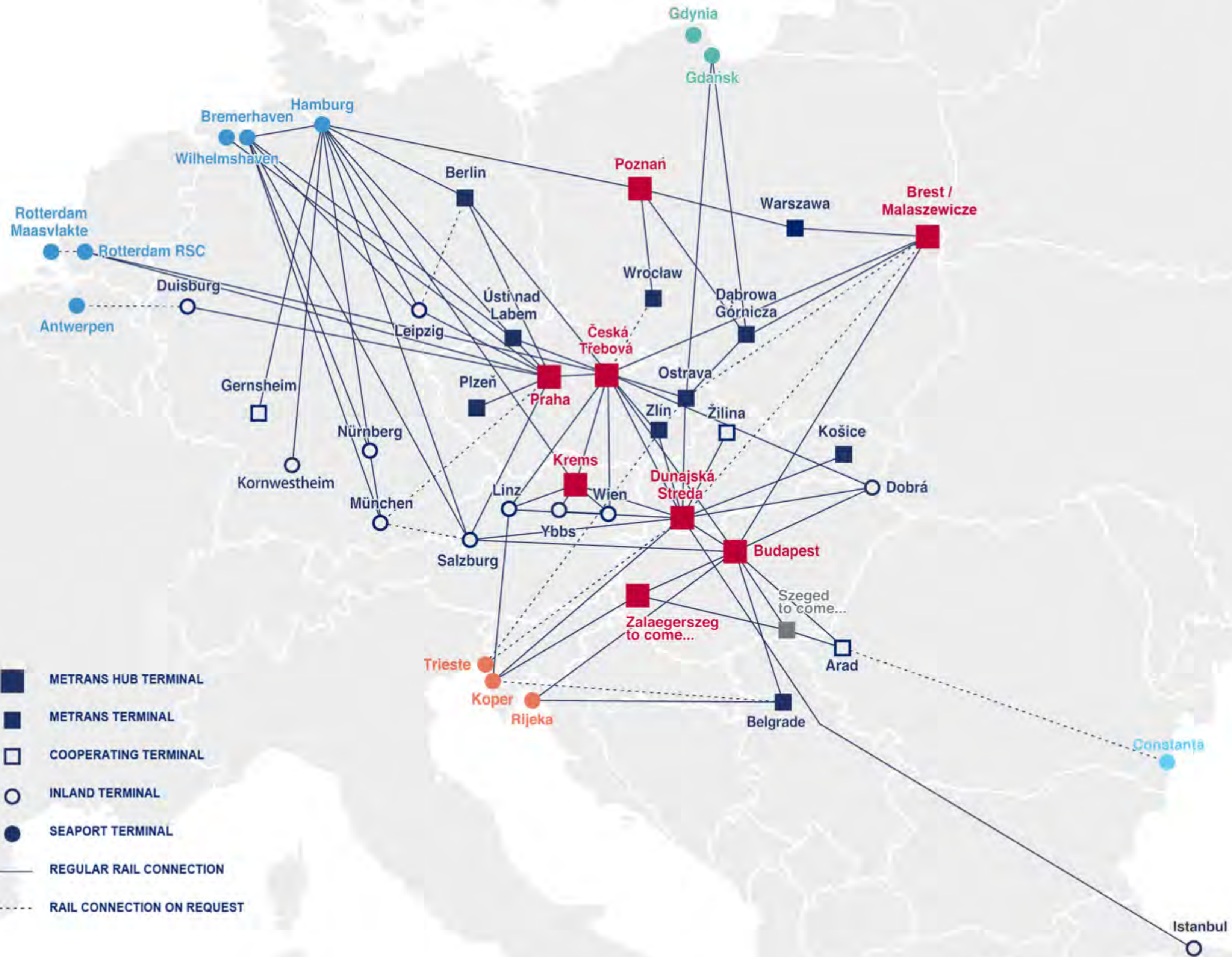


# METRANS

The European Intermodal RAIL Bridge



**OVER 650 REGULAR TRAINS PER WEEK**



## TERMINALS

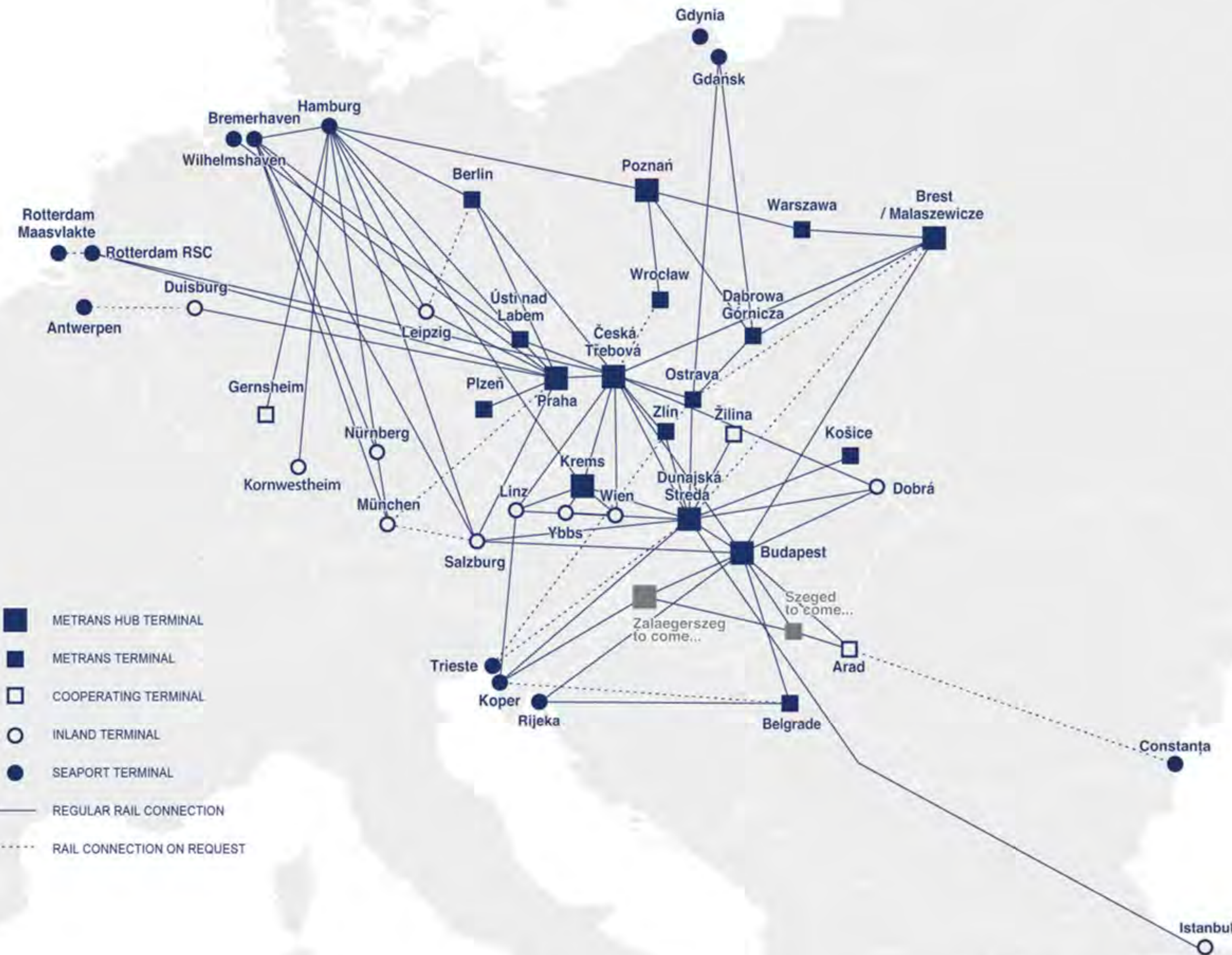
- 7 METRANS HUB TERMINALS**
  - Praha & Ceska Trebova, CZ
  - Krems, AT
  - Dunajska Streda, SK
  - Poznan & Malaszewicze, PL
  - Budapest (+ Zalaegerszeg to come), HU
- 13 METRANS END TERMINALS**  
DE, CZ, PL, RO, RS, SK

## SEAPORTS

- NORTH SEA**
  - Hamburg, Bremerhaven, Wilhelmshaven - DE
  - Rotterdam - NL
  - Antwerpen - BE
- ADRIATIC SEA**
  - Rijeka – HR
  - Koper – SI
  - Trieste – IT
- BALTIC SEA**
  - Gdansk, Gdynia - PL
- BLACK SEA**
  - Constanta – RO

# METRANS

Over 650 regular train connections per week



- METRANS HUB TERMINAL
- METRANS TERMINAL
- COOPERATING TERMINAL
- INLAND TERMINAL
- SEAPORT TERMINAL
- REGULAR RAIL CONNECTION
- RAIL CONNECTION ON REQUEST

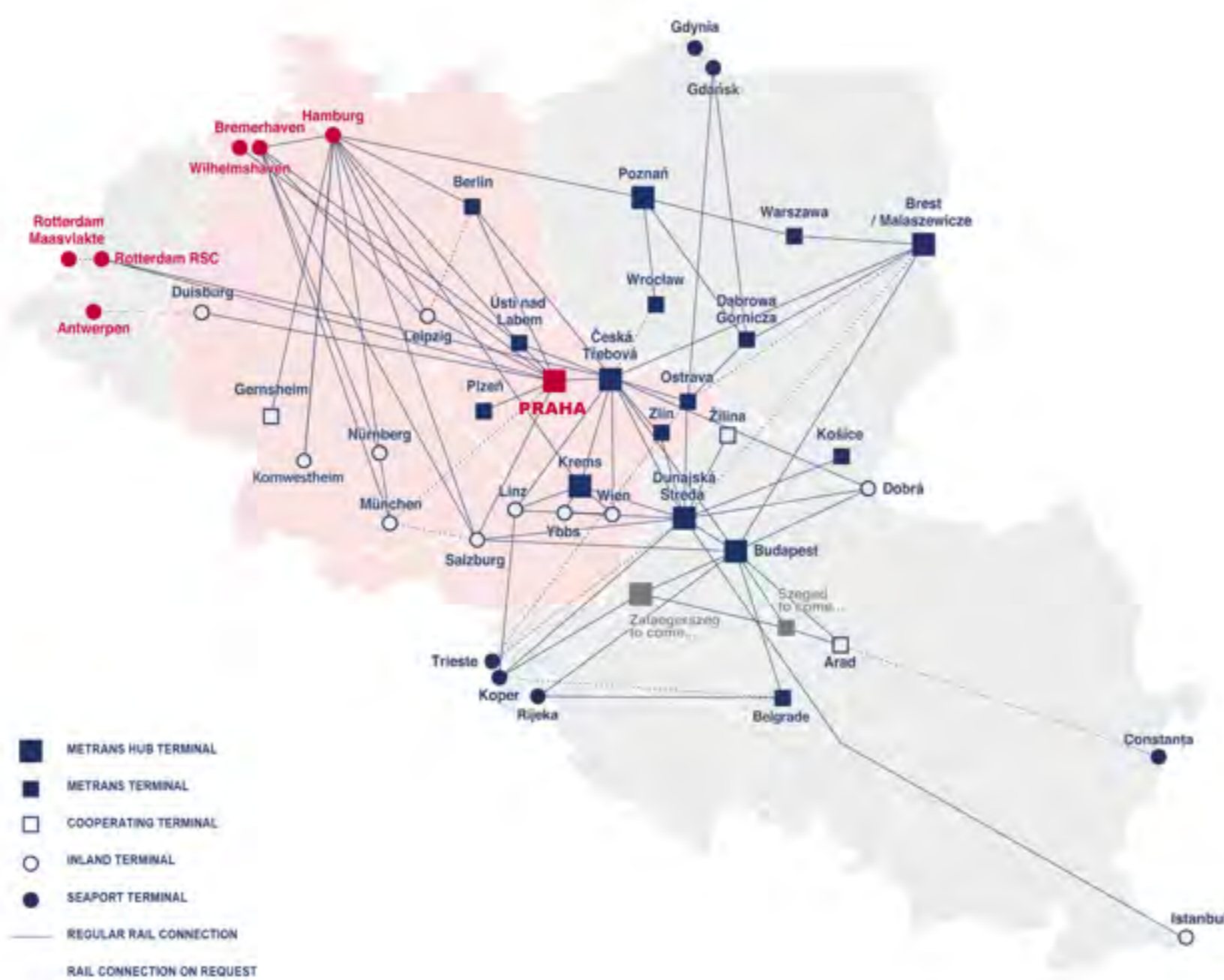
FROM ↔ TO	TRAINS PER WEEK	FROM ↔ TO	TRAINS PER WEEK
Budapest ↔ Arad	up to 3	Hamburg ↔ Berlin	6
Budapest ↔ Belgrade (Indjija)	up to 3	Hamburg ↔ Ceska Trebova	up to 38
Bremerhaven ↔ Ceska Trebova	11	Hamburg ↔ Dunajska Streda	14
Bremerhaven ↔ Dunajska Streda	6	Hamburg ↔ Gadki	22
Bremerhaven ↔ Gadki	up to 13	Hamburg ↔ Gernsheim	6
Bremerhaven ↔ München	6	Hamburg ↔ Kornwestheim	10
Bremerhaven ↔ Nürnberg	6	Hamburg ↔ Krams	3
Bremerhaven ↔ Praha	9	Hamburg ↔ Leipzig	up to 14
Bremerhaven ↔ Leipzig	3	Hamburg ↔ München	18
Ceska Trebova ↔ Budapest	4	Hamburg ↔ Nürnberg	18
Ceska Trebova ↔ Dunajska Streda	36	Hamburg ↔ Praha	47
Ceska Trebova ↔ Krams	2	Koper ↔ Budapest	28
Ceska Trebova ↔ Linz	up to 2	Koper ↔ Dunajska Streda	35
Ceska Trebova ↔ Malaszewice	up to 4	Malaszewice ↔ Budapest	up to 2
Ceska Trebova ↔ Ostrava	12	Malaszewice ↔ Hamburg	up to 2
Ceska Trebova ↔ Zlin	14	Nürnberg → München	6
Duisburg ↔ Praha	6	Ostrava ↔ Dabrowa Gornicza	12
Dunajska Streda ↔ Budapest	24	Praha ↔ Ceska Trebova	28
Dunajska Streda ↔ Halkali	up to 3	Praha → Leipzig	1
Dunajska Streda ↔ Kosice	12	Praha ↔ Plzeň	12
Dunajska Streda ↔ Krams	6	Praha ↔ Salzburg	9
Dunajska Streda ↔ Zilina	12	Praha ↔ Wilhelmshaven	8
Gadki ↔ Dabrowa Gornicza	6	Rijeka ↔ Belgrade (Indjija)	up to 3
Gadki ↔ Katy Wroclawskie	6	Rijeka ↔ Budapest	up to 3
Gadki ↔ Pruszkow	up to 8	Rotterdam ↔ Ceska Trebova	up to 8
Gdansk ↔ Dabrowa Gornicza	12	Rotterdam ↔ Praha	12
Gdansk ↔ Ostrava	12	Salzburg → Hamburg	3



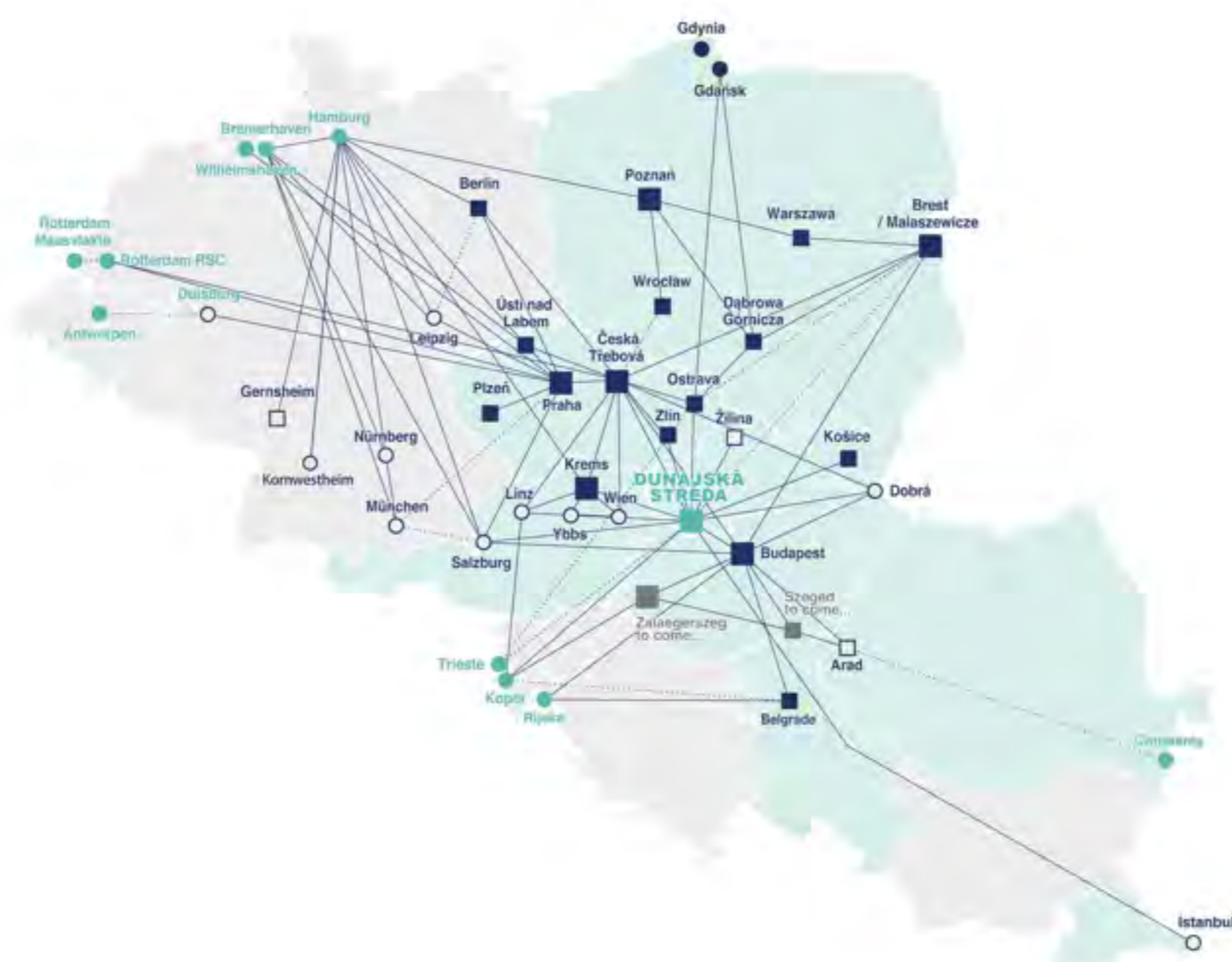
# METRANS

Rail & terminal network

## KEY OPERATION OFFICES



- **PRAHA, CZ**  
METRANS, a.s. Head Quarter
- Operation territory**
  - Ports: BE, DE, NL
  - Countries: AT, CZ, DE



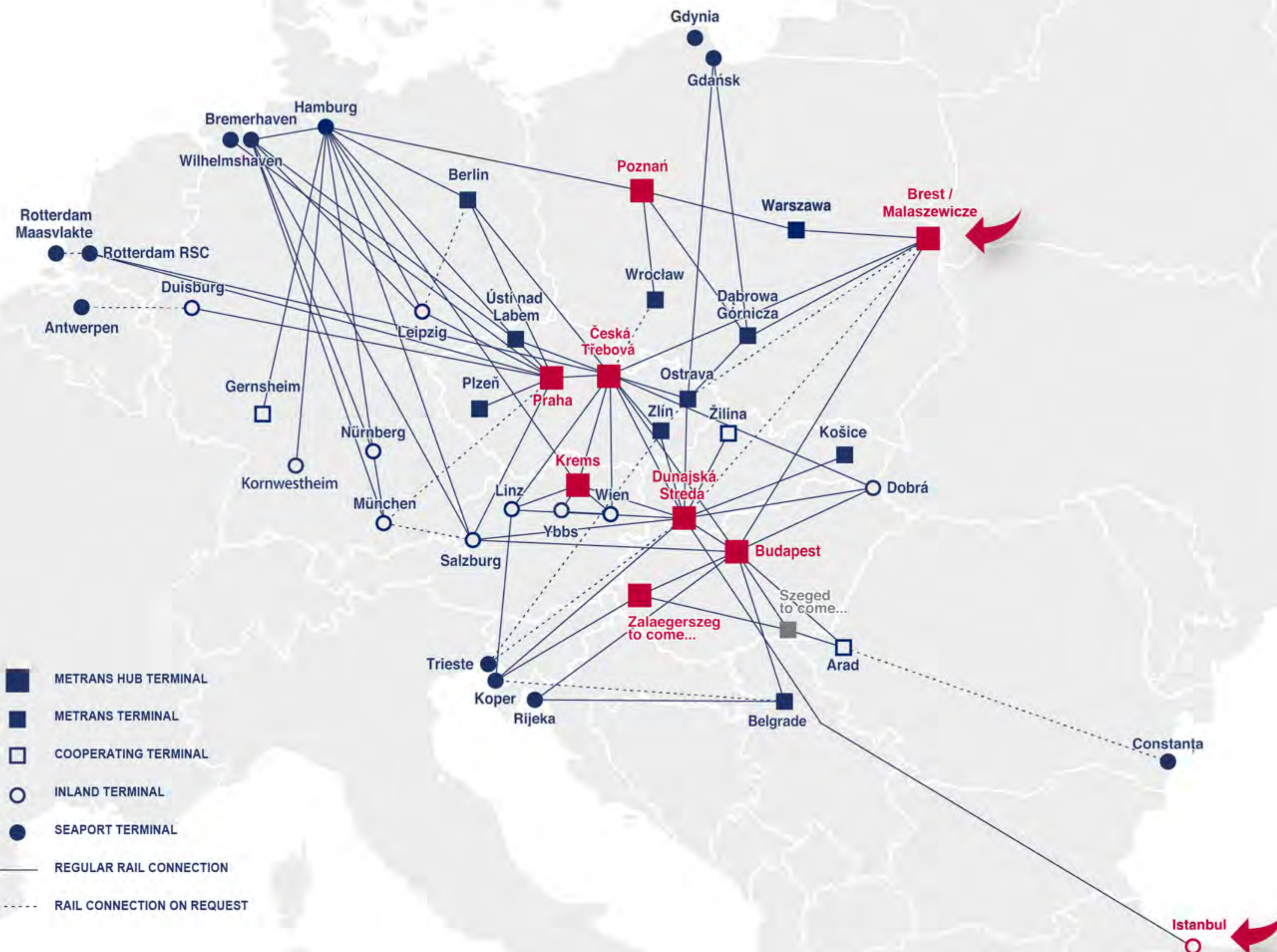
- **DUNAJSKA STREDA, SK**
- Operation territory**
  - Ports: BE, DE, IT, NL, RO, SL
  - Countries: AT, CZ, HU, PL, RO, RS, SK, TR



- **POZNAN (GADKI), PL**
- Operation territory**
  - Ports: DE
  - Countries: PL

# SILK ROAD

METRANS connections to the New Silk Road



## MALASZEWICZE/BREST TO

- Warszawa
- Poznan
- Hamburg
- Duisburg
- Munich/Nuremberg via Hamburg
- Ceska Trebova with daily connection to all METRANS terminals as shown

 [www.metrans.eu](http://www.metrans.eu)

**SILK ROAD CONNECTION VIA ISTANBUL**

FULL ACCES to the network of METRANS also on this routing.

# NEW CONNECTIONS TO/FROM KORNWESTHEIM

2024



- Start from January 2024
- Daily service Hamburg - Kornwestheim and v.v.
- Gateway connection from Hamburg to Bremerhaven and Wilhelmshaven
- CO<sub>2</sub> neutral with HHLA Pure

 [www.metrans.eu](http://www.metrans.eu)

# ADRIA RAIL

New member of the METRANS group



## THE GOAL



ADRIA RAIL organizes transportation to/from/through Croatia. The goal is to create a regular and reliable rail connection between the Adriatic ports and the Indjija terminal.

## TERMINAL INTEGRATION



We will integrate the Indjija terminal into the METRANS network through regular train connections to our terminal in Budapest.

## GROWING NETWORK



Through integration, Indjija terminal will become the terminal No. 20 in the METRANS network.

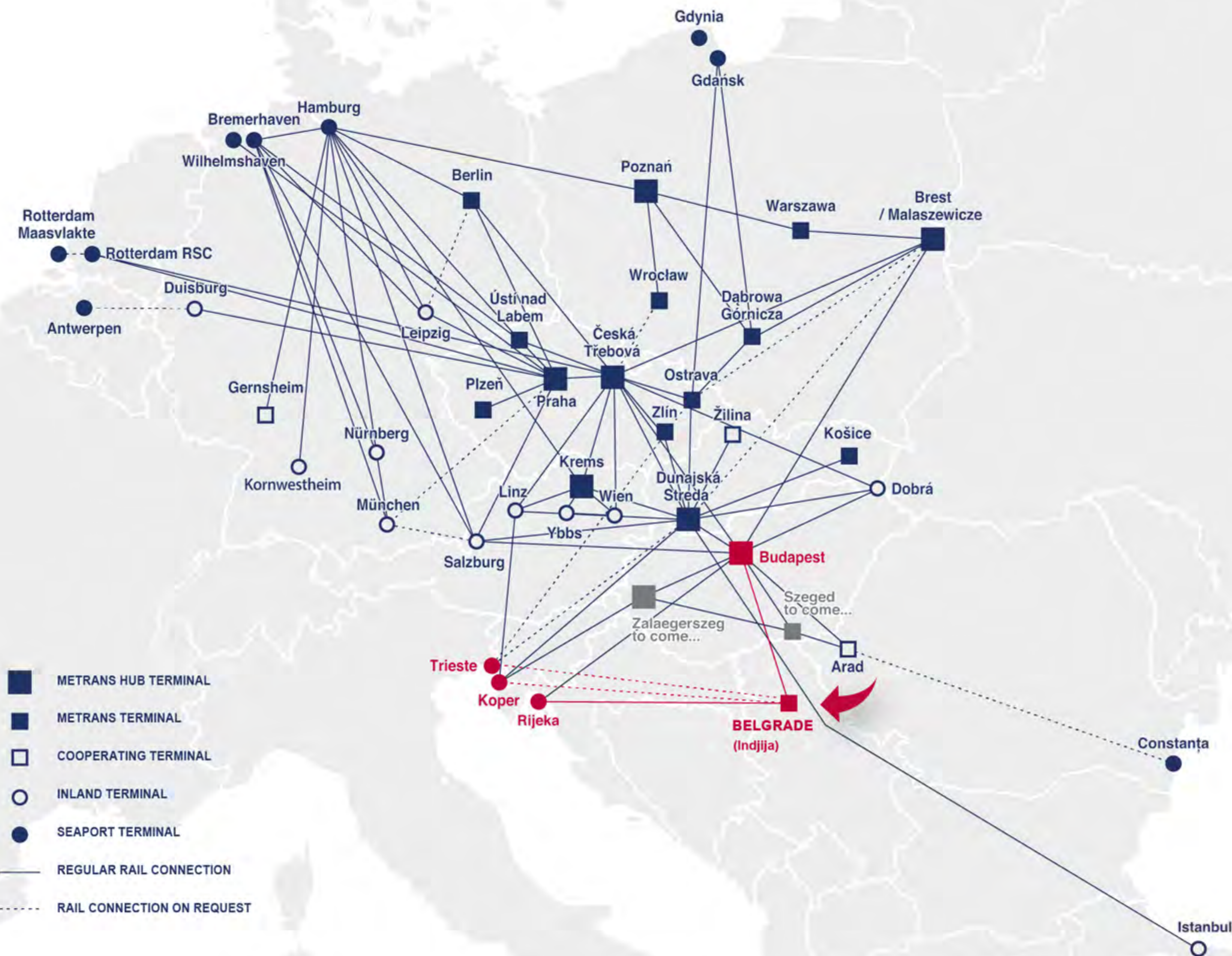
## QUALITY TRANSPORT



We are creating a rail connection that will enable regular service to almost all major seaports in Southern and Northern Europe.

# CONNECTIONS TO/FROM SERBIA

Container terminal Indjija near Belgrade



- Departures to/from Port of Rijeka and HUB terminal Budapest Csepel
- Gateway solution through METRANS HUB Budapest Csepel terminal to reach North West Continent and Adriatic ports as well as hinterland terminals within METRANS network
- On-request connection to/from Port of Koper
- On-request connection to/from Port of Trieste

 [www.metrans.eu](http://www.metrans.eu)



# HUB TERMINALS

## PRAHA

since 1991



- Size: 420,000 m<sup>2</sup>
- Storage capacity: 15,000 TEU full + 10,000 TEU empty
- 7 sidings of 600 m, 2 sidings of 550 m, 6 sidings of 350 m
- 6 RMG (Rail Mounted Gantry Crane), 3 reachstackers (45t), 10 reachstackers (10/12t), 2 forklifts (16t), 4 shunters
- 10 trains can be handled at the same time
- Repair facility for containers
- On-site customs office
- Operates 24/7/365

## DUNAJSKA STREDA

since 1999



- Size: 326,000 m<sup>2</sup>
- Storage capacity: 25,000 TEU full + 15,000 TEU empty
- 5 sidings of 650 m, 4 sidings of 550 m
- 4 RMG (Rail Mounted Gantry Crane), 7 reachstackers (45t), 8 reachstackers (12t), 3 reachstackers (8t), 2 forklifts (16t, 8t)
- 9 trains can be handled at the same time
- Repair facility for containers
- On-site customs office
- Operates 24/7/365

## CESKA TREBOVA

since 2013



- Size: 138,000 m<sup>2</sup>
- Storage capacity: 4,500 TEU full + 4,200 TEU empty
- 6 sidings of 740 m
- 4 RMG (Rail Mounted Gantry Crane), 3 reachstackers (12t)
- 6 trains can be handled at the same time
- On-site customs office
- Repair facility for containers
- Operates 24/7/365

# HUB TERMINALS

## BUDAPEST

since 2017



- Size: 163,500 m<sup>2</sup>
- Storage capacity: 7,500 TEU
- 6 sidings of 650 m, 2 sidings of 500 m
- 4 RMG (Rail Mounted Gantry Crane), 6 reachstackers (45t), 4 reachstackers (12t), 3 forklifts (16t)
- 6 trains can be handled at the same time
- Repair facility for containers
- On-site customs office
- Operates 24/7/365

## POZNAN

(GADKI)

since 2011



- Size: 175,000 m<sup>2</sup>
- 1 siding of 750 m, 3 sidings of 630 m
- 10 reachstackers with lifting capacity up to 45 tons
- 2 trains can be handled at the same time
- On-site customs office
- Handling of swap bodies and semi-trailers
- Operates 24/7/365

## KREMS AN DER DONAU

since 2012



- Size: 40,000 m<sup>2</sup>
- Storage capacity: 1,500 TEU full + 2,000 TEU empty
- 4 sidings of 680 m
- 3 reachstackers (45t), 2 reachstackers (12t)
- On-site customs office
- Repair facility for containers



# HUB TERMINALS

## MALASZEWICZE

operated by CL Europort, since 2022



- METRANS member since: 2022
- Size: 190,000 m<sup>2</sup>
- Storage: 6000 TEU
- Rail Tracks:
  - 1435 mm - 6 tracks length of 3000 m
  - 1520 mm - 9 tracks length of 6000 m
- 1 RMG (Rail Mounted Gantry Crane), 4 reachstackers (45t), 1 reachstacker (10t)
- Reefer plugs
- Depot for empty containers

## ZALAEGERSZEG

to come... 2025/2026



- Size: 150,000 m<sup>2</sup>
- Intermodal HUB terminal & logistics center in western Hungary for the Adriatic Corridor (Koper, Trieste, Rijeka)
- Daily connection to Hamburg, Bremerhaven and the whole METRANS network
- Operation start 2025/2026

**NEW METRANS CONTAINER TERMINAL IN HUNGARY TO COME...**



The new terminal to become a major international logistics hub for the Adriatics in the future.



The excellent geographical location on the southern transport corridor, close to the Slovenian and Austrian borders, creates many logistical advantages and will also be able to serve as a buffer for the southern ports.



- A Northern ports 1200 km
- B Adriatic ports 350 km
- C Port of Piraeus 1600 km

# END TERMINALS

## ZLIN

since 1994



- Size: 68,600 m<sup>2</sup>
- Storage capacity: 1,300 TEU full + 1,200 TEU empty
- 3 sidings of 550 m, 1 siding of 400 m, 2 sidings of 350 m, 2 sidings of 300 m
- 4 reachstackers (45t), 4 reachstackers (12t)
- On-site customs office
- Repair facility for containers
- Operates 24/7/365

## PLZEN

since 2007



- Size: 50,000 m<sup>2</sup>
- Storage capacity: 1,300 TEU full + 1,200 TEU empty
- 3 sidings of 400 m
- 1 RMG (Rail Mounted Gantry Crane) with multimodal spreader for handling trailers and swap bodies and Remote Operation Station control system, 2 reachstackers (10/12t)
- Repair facility for containers
- Operates 24/7/365

## KOSICE

since 2008



- Size: 46,500 m<sup>2</sup>
- Storage capacity: 3,000 TEU full + 3,000 TEU empty
- 2 sidings of 550 m
- 4 reachstackers (45t), 2 reachstackers (12t), 2 forklifts (16t)
- On-site customs office
- Repair facility for containers
- Operates 24/7/365

# END TERMINALS

## OSTRAVA

since 2011



- Size: 40,000 m<sup>2</sup> plus 60,000 m<sup>2</sup> depot
- Storage capacity: 1,200 TEU full + 5,000 TEU empty
- 2 sidings of 250 m
- 1 RTG (Rubber Tyred Gantry Crane), 3 reachstackers (45t), 3 reachstackers (12t)
- On-site customs office
- Repair facility for containers
- Operates 24/7/365

## USTI NAD LABEM

since 2015



- Size: 25,500 m<sup>2</sup>
- Storage capacity: 1,500 TEU full + 2,000 TEU empty
- 1 siding of 185 m, 2 sidings of 160 m
- 1 RMG (Rail Mounted Gantry Crane), 3 reachstackers (45t), 2 reachstackers (12t)
- On-site customs office
- Repair facility for containers
- Operates 24/7/365

## ZILINA

operated by TIP ZILINA



- Concession since 2019
- Size: 150,000 m<sup>2</sup>
- 2 sidings of 750 m
- 2 RMG (Rail Mounted Gantry Crane), 2 reachstackers (12t)
- Repair facility for containers
- Handling of swap bodies and semi-trailers

# END TERMINALS

## WARSZAWA (PRUSZKOW)

since 1993



- Size: 57,000 m<sup>2</sup>
- 2 sidings of 600 m, 1 siding of 350 m
- 7 reachstackers with lifting capacity up to 45 tons
- Handling of swap bodies and semi-trailers
- On-site customs office

## DABROWA GORNICZA

since 2010



- Size: 170,000 m<sup>2</sup>
- 2 sidings of 625 m, 1 siding of 600 m, 1 siding of 500 m
- 3 reachstackers with lifting capacity up to 45 tons, 1 reachstacker (12t)
- Reefer plugs – PTI incl. small repairs
- Handling of swap bodies
- On-site customs office

## WROCLAW (KATY WROCLAWSKIE)

since 2015



- Size: 65,000 m<sup>2</sup>
- 2 sidings of 600 m
- 1 gantry crane, 5 reachstackers (45t)
- Reefer plugs – PTI incl. small repairs
- Handling of swap bodies and semi-trailers
- On-site customs office

# END TERMINALS

## GERNSHEIM GUT

since 2020



- Size: 54,000 m<sup>2</sup>
- Sidings: 2 x 340 m
- 1 RMG (Rail Mounted Gantry Crane), 1 slewing jib crane, 2 reachstackers (45t)
- Truck capacity: 30 trucks (long term sub-contractors)

## BERLIN KOWU

since 2019



- Size: 20,000 m<sup>2</sup>
- 1 siding of 800 m, 3 sidings of 500 m
- 1 RMG (Rail Mounted Gantry Crane), 2 reachstackers (45t), 1 reachstacker (12t)
- Reefer plugs – PTI incl. small repairs
- Depot for empty containers—capacity: 2,000 TEU
- On-site customs office

## ARAD

since 2021



- Size: 75,000 m<sup>2</sup>
- Sidings: 4 x 350 m length
- Parking for 200 trucks
- 2 reachstackers (45t)
- Own truck capacity: 10
- A1 highway - 3 km from the terminal

# NEW END TERMINALS



## BELGRADE (INDJIJA) since 2023



- Size: 35,000 m<sup>2</sup>
- Sidings: 2 x 250 m
- 2 reachstackers (45t)
- Forklifts 12t, 3t, 2t
- Regular connection Adriatic ports ↔ Belgrade (Indjija)
- Operates 24/7

## SZEGED to come... 2026



- Size: 100,000 m<sup>2</sup>
- Annual capacity: ~ 50.000 TEU
- Sidings: 2 x 335 m
- Intermodal terminal in southern Hungary
- Construction completion by 2026
- Highway connection to HU, RS, RO
- Connection to the main railway track to the south via Roszke crossing

# METRANS RAIL REPAIR SHOPS

## DYKO RAIL REPAIR SHOP

Kolin, Czech Republic



- Established in 1940
- Acquired by METRANS in 2007
- Licensed to repair Siemens and Bombardier locomotives
- Repairs:
  - container wagons
  - running gear for passenger carriages
  - locomotives and wheelsets
- Repairs within free capacities available also for external clients

## RAIL & REACHSTACKER REPAIR SHOP

Dunajska Streda, Slovak Republic



- Established in 2019
- Repairs:
  - container wagons
  - locomotives
  - reach stackers



# HHLA PURE

CO<sub>2</sub>-neutral Container handling & transport

With the HHLA Pure product METRANS offers our clients a CO<sub>2</sub>-free handling and also transport, and thus, together we make a real contribution towards climate protection.



HHLA and METRANS course of action

- Modern hybrid and electric locomotives
- Electrification at the port container terminal with electric storage crane system, electric vehicles







## HOW DOES THE CO<sub>2</sub> COMPENSATION WORK?

### COMPENSATION IS STILL WORTHWILE, EVEN WHEN LARGE DISTANCE ARE INVOLVED

Burning fossil fuels releases CO<sub>2</sub> emissions into the atmosphere.

As the atmosphere has no borders, it makes no difference where in the world the CO<sub>2</sub> emissions are produced; the impact is the same the world over.

THE SOLUTIONS – with the course of action we solve CO<sub>2</sub> emissions – for remaining emission we buy Certificates for environmental projects.



# OUR PRODUCT

Green handling & green transport

## CERTIFIED CO<sub>2</sub> NEUTRALITY FOR TRANSPORTATION FROM THE PORT ALL THE WAY TO EUROPE'S HINTERLAND

- Handling at the HHLA container terminal with widely electrified processes
- Transport and collection via METRANS with CO<sub>2</sub> optimized trains and wagons
- Any currently unavoidable CO<sub>2</sub> emissions are offset through certified development projects to the highest international standard (Gold)
- Confirmation of climate-neutral transports for customers
- METRANS energy-efficient electric trains are travelling only with green energy in Austria and Germany



## PROCESS

- Certification of HHLA Pure TÜV Nord
- Receiving customer-specific transport (volume/route)
- Offsetting and monitoring by TÜV Nord



# PILLARS OF SUCCESS

1

## One of the leaders of intermodal transport

We are the largest Central European operator of intermodal transport with more than 30 years of container shipping tradition.

2

## Own network of 20 terminals

We operate 20 intermodal terminals in Czech Republic, Slovakia, Poland, Hungary, Austria, Germany, Serbia, Romania and today we have further under construction.

3

## Stable employer

We have a highly qualified team of employees with many years of experience.

4

## Climate protection

Using modern hybrid and electric locomotives and with our HHLA Pure service we are offering a CO<sub>2</sub> free container handling and transport.

5

## Own hardware and software



# THANK YOU!

Find us on [metrans.eu](https://www.metrans.eu) and

